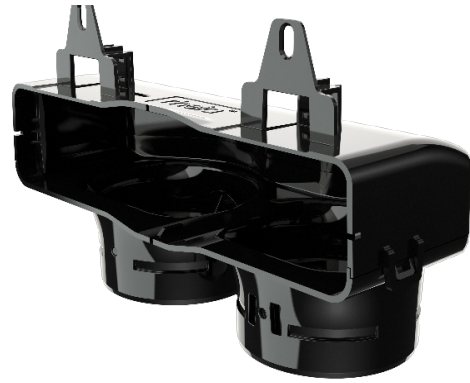


Dual Duct Wall Boot Assembly

Assembly Part # 10-01-320

For new construction wall installations only. Attaches to framing using the Rheia Hanger Bar Assembly (00-00-240), or via support blocking. Includes two adjustable damper blades. Must be used with Rheia-approved Slotted Wall Diffusers (10-04-090 or 10-04-091).



Dual Duct Wall Boot Assembly

SPECIFICATIONS

For installation in 2x4 or larger wall framing or steel stud framing.

Intened Use

Stud spacing: Max. 24" o.c. Min. 16" o.c. (when using a Hanger Bar)
For optimum performance locate the center of the boot between 4 1/2" and 10" from the upper edge of the wall top plate.

Material

High Sidewall Boot: Flame-retardant Polycarbonate /ABS blend.
Damper Blades: Flame-retardant Polycarbonate /ABS blend.
Recyclable.

Installation

Follow Rheia's Installation Guidelines for detailed installation procedures and practices.
When using the Rheia Hanger Bar, once the boot is correctly positioned, fasten the boot to the Hanger Bar using a sheet metal screw with a minimum length of 3/8".
When mounting the High Sidewall boot directly to framing, use two pan-head wood screws with a minimum length of 5/8".

Listings

Manufactured with UL94 V-0 rated engineering thermoplastic.

Warranty

2-year limited warranty.
For warranty information go to www.rheiacomfort.com/contact.

DIMENSIONS

Assembly Dimensions (with dampers closed)
Length 4.0" (100.9 mm), Width 9.0" (227.9 mm),
Height 5.6" (143.3 mm)

Assembly Weight: 0.46 lbs.

PERFORMANCE DATA

Performance based on boot and diffuser assemblies together. Components include:

1. Dual Duct Wall Boot Assembly - Rheia Part Number 10-01-320
2. Slotted Diffuser - Rheia Part Number 10-04-091
3. 2 x 3" Ferrules - Rheia Part Number 10-01-010

Table 1: High Sidewall Boot & Slotted Diffuser performance data

	Neck velocity (fpm)	407	611	815	1018
Neck size 3" Dia. Diffuser size 8"x1-1/2"	Pressure drop (IWC)	0.016	0.036	0.066	0.102
	Airflow (CFM)	20	30	40	50
	Linear throw (feet)	3-6-9	8-11-16	10-16-19	14-19-25

Performance Data Notes:

1. Throw data is given in feet to terminal velocities of: 150 fpm (first shown) 100 fpm (middle shown) and 50 fpm (last shown).
2. Pressure drops given for the boot and diffuser assembly only without a damper installed. For additional pressure drops with the damper installed see Table 2.

Table 2: Damper position pressure drop

Airflow (CFM)	Damper Position				
	1 (Open)	2	3	4	5 (Closed)
Damper blade pressure drop (IWC)					
20	0.006	0.028	0.078	0.232	0.443
30	0.013	0.061	0.168	0.501	0.957
40	0.023	0.106	0.290	0.865	1.653
50	0.035	0.162	0.444	1.322	2.525